

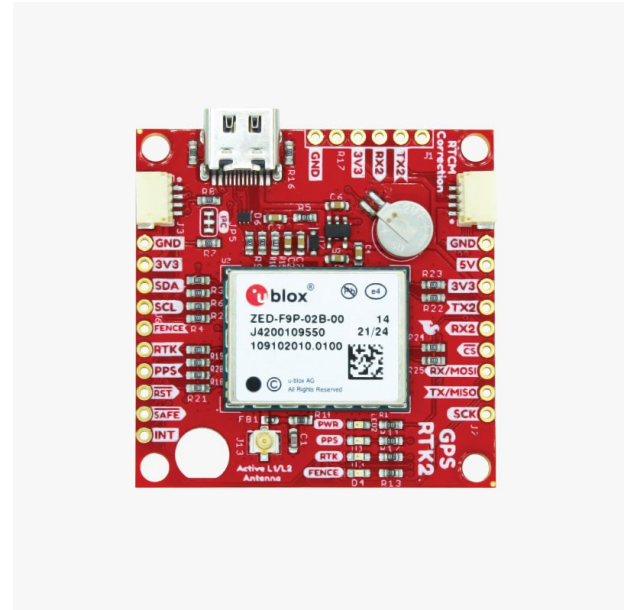
# GPS-RTK2

Includes:

- 1 SparkFun GPS-RTK2 Board (ZED-F9P) (Qwiic) manufactured by ArduSimple.



More info about the product!



GPS-RTK2 SKU is: AS-OPENHW-GPSRTK2-00

Get a discounted bulk price on this product for orders of 50 units or more. Contact us at [info@ardusimple.com](mailto:info@ardusimple.com) to get a quote.

## Description

ArduSimple manufactures the SparkFun GPS-RTK2 Board - ZED-F9P (Qwiic) GNSS receiver following the Open Source Hardware (OSHW) guidelines.

ArduSimple has not any relation with SparkFun, in case of any issues, warranty is provided by ArduSimple.

Check out [GPS-RTK2](#) page to learn more.

Good to know:

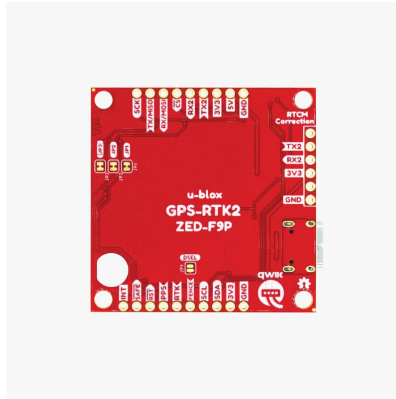
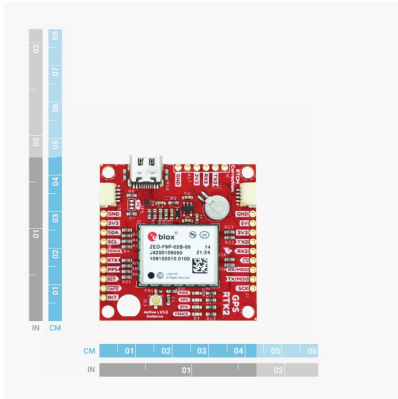
- This product is manufactured and sold by ArduSimple, designed by Sparkfun.
- This product is the same as part number GPS-15136.
- You are allowed to sale your version of this board (as is or with modifications)
- This product is compatible but doesn't include [multiband GNSS antenna](#), which is necessary to use the product. The module will not give good performance with a standard GNSS antenna, requires a multiband one.

## Specifications

### ZED-F9P features

- Centimeter level precision
  - <1cm with a base station up to 35km
  - <1cm with NTRIP up to 35km
  - <4cm with SSR corrections
  - <1.5m in standalone mode
  - <0.9m standalone with SBAS coverage
- Update rate
  - Default: 1Hz
  - With maximum performance: up to 10Hz
  - With reduced performance: up to 20Hz
- Multi band: L1, L2 and E5b support
- Multifrequency and Multiconstellation:
  - GPS: L1C/A L2C
  - GLONASS: L1OF L2OF
  - Galileo: E1-B/C E5b
  - BeiDou: B1I B2I
  - QZSS: L1C/A L2C
  - SBAS: WAAS, EGNOS, MSAS, GAGAN and SouthPAN
- Start-up times:
  - First position fix: 25 seconds (cold), 2 seconds (hot)
  - First RTK fix: 35 seconds (cold)
- RAW data output in UBX format
- Base and Rover functionality
- Operating temperature Range: -40 to +85deg
- Documentation: RED, RoHS

## Image Gallery



## Documentation

Configuration files      <https://www.ardusimple.com/configuration-files/>

GPS-RTK2 includes free basic technical support. Contact [info@ardusimple.com](mailto:info@ardusimple.com) for more information.

Data and descriptions in this document are subject to change without notice. Product photos and pictures are for illustration purposes only and may differ from the real product appearance.