

simpleRTK3B Micro Septentrio

Includes:

- 1 simpleRTK3B Micro board with assembled Septentrio module



More info about the product!



simpleRTK3B Micro Septentrio has several different configurations to provide you with flexibility:

SKU	Variation Name
AS-RTK3B-MICRO-MH-L1L2SMASSTD-00	Mosaic-H / SMA / No
AS-RTK3B-MICRO-MH-L1L2SMAEXT-00	Mosaic-H / SMA / ETH+SD+COM3+GP1
AS-RTK3B-MICRO-MH-L1L2UFLSTD-00	Mosaic-H / uFL / No
AS-RTK3B-MICRO-MH-L1L2UFLEXT-00	Mosaic-H / uFL / ETH+SD+COM3+GP1
AS-RTK3B-MICRO-MX-L125SMASSTD-00	Mosaic-X5 / SMA / No
AS-RTK3B-MICRO-MX-L125SMAEXT-00	Mosaic-X5 / SMA / ETH+SD+COM3+GP1

SKU	Variation Name
AS-RTK3B-MICRO-MX-L125UFLSTD-00	Mosaic-X5 / uFL / No
AS-RTK3B-MICRO-MX-L125UFLEXT-00	Mosaic-X5 / uFL / ETH+SD+COM3+GP1

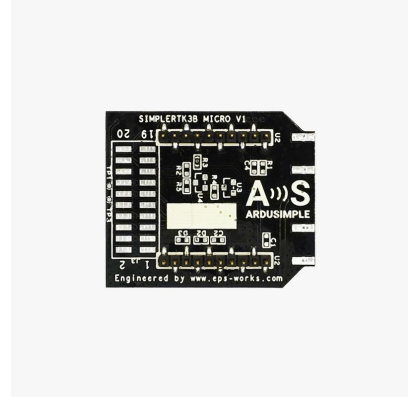
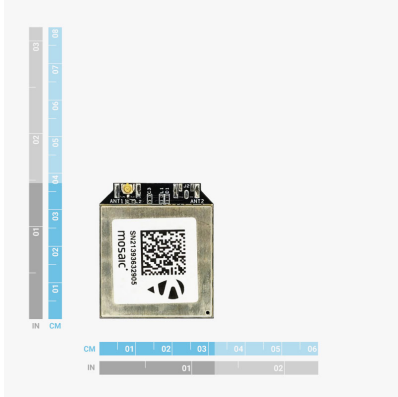
Get a discounted bulk price on this product for orders of 50 units or more. Contact us at info@ardusimple.com to get a quote.

Description

simpleRTK3B Micro Septentrio accelerates your RTK project thanks to its easy to integrate footprint, integrated RF connector & high availability. With Septentrio Mosaic-X5 and Mosaic-H modules. We take care of the RF design and complex module integration so you can focus on your PCB design and the application.


- Smallest Form Factor
- Many Mosaic pins available
- Re-usable: if you do a new PCB you can un-mount from your previous version the expensive GPS!
- Smaller PCB area needed: you can use the space below the module to place other components!
- Easy to solder by hand or machine
- No RF knowledge required, because all RF components are already inside: simply uFL for pigtail connection or long SMA for direct panel mount
- Bulk pricing starting 50 units

Image Gallery



Pinout

TOP VIEW



Description	Name	#	#	Name	Description
3.3-3.6V 400mA max	VCC	1	20	N/C	Don't connect
Data out VCC level	TX1	2	19	EXTINT	EXTINT INPUT VCC level
Data in VCC level	RX1	3	18	GPLED	Configurable GPLED out VCC level
Don't connect	N/C	4	17	N/C	Don't connect
Leave open for always ON	RESET	5	16	RX2	Data in VCC level
5V to enable USB	V_USB	6	15	N/C	Don't connect
	USB+	7	14	V_BKCP	V_BCKP
	USB-	8	13	TPS	Timepulse output VCC level
Don't connect	N/C	9	12	TX2	Data out VCC level
Must connect to GND	GND	10	11	GND	Must connect to GND

TOP VIEW (Optional secondary connector)

Description	Name	#	#	Name	Description
Configurable GP1 out VCC level	GP1	2	1	RMII_CLK	LAN PHY Clock
SD card CMD line	SD_CMD	4	3	MDIO	LAN PHY control data
SD card CLK line	SD_CLK	6	5	MDC	LAN PHY control clock
SD card DAT0 line	SD_DAT0	8	7	RMII_RXD1	LAN PHY receive data 1
Must connect to GND	GND	10	9	RMII_RXD0	LAN PHY receive data 0
	TX3	12	11	RMII_CRSDV	LAN PHY CRS
	RX3	14	13	RMII_RXER	LAN PHY RX error
	LOGLED	16	15	RMII_TXEN	LAN PHY transmit enable
Log on/off or mount/unmount SD	LOGBUTTON	18	17	RMII_TXD0	LAN PHY transmit data 0
LAN reset (low to reset the PHY)	nRST_LAN	20	19	RMII_TXD1	LAN PHY transmit data 1

simpleRTK3B Micro Septentrio includes free basic technical support. Contact info@ardusimple.com for more information.

Data and descriptions in this document are subject to change without notice. Product photos and pictures are for illustration purposes only and may differ from the real product appearance.