

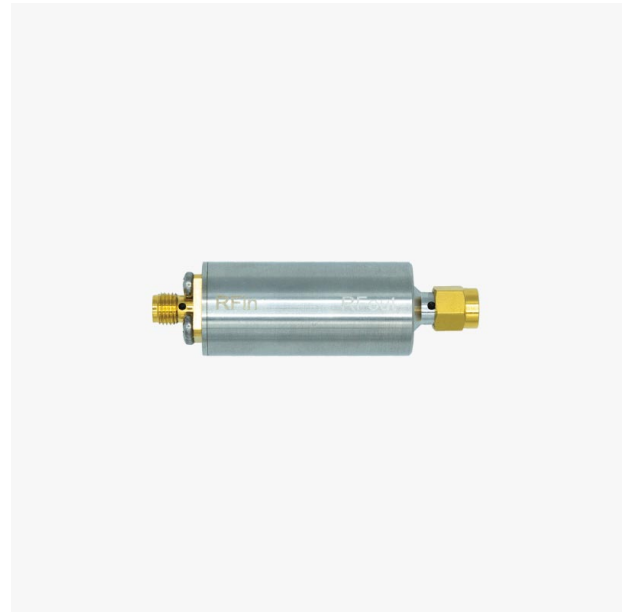
Inline GPS/GNSS Antenna Amplifier (L1/L2/L5/L6)

Includes:

- 1 Inline GNSS Antenna Amplifier (L1/L2/L5/L6)



More info about the product!



Inline GPS/GNSS Antenna Amplifier (L1/L2/L5/L6) SKU is: AS-ACC-RFINLINEAMP-L1256-2SMA-00

Get a discounted bulk price on this product for orders of 50 units or more. Contact us at info@ardusimple.com to get a quote.

Description

An inline amplifier is required when the antenna cable length attenuates the GNSS signal to a level below the receiver's recommended minimum input level. With ArduSimple's low loss antenna cables and antennas, this happens after 15-25m of cable between the antenna and the GNSS receiver. The exact maximum distance will depend on the model of antenna and receiver that you are using.

For example, if you would like to have a 40m cable between the antenna and the receiver, you will need to connect:

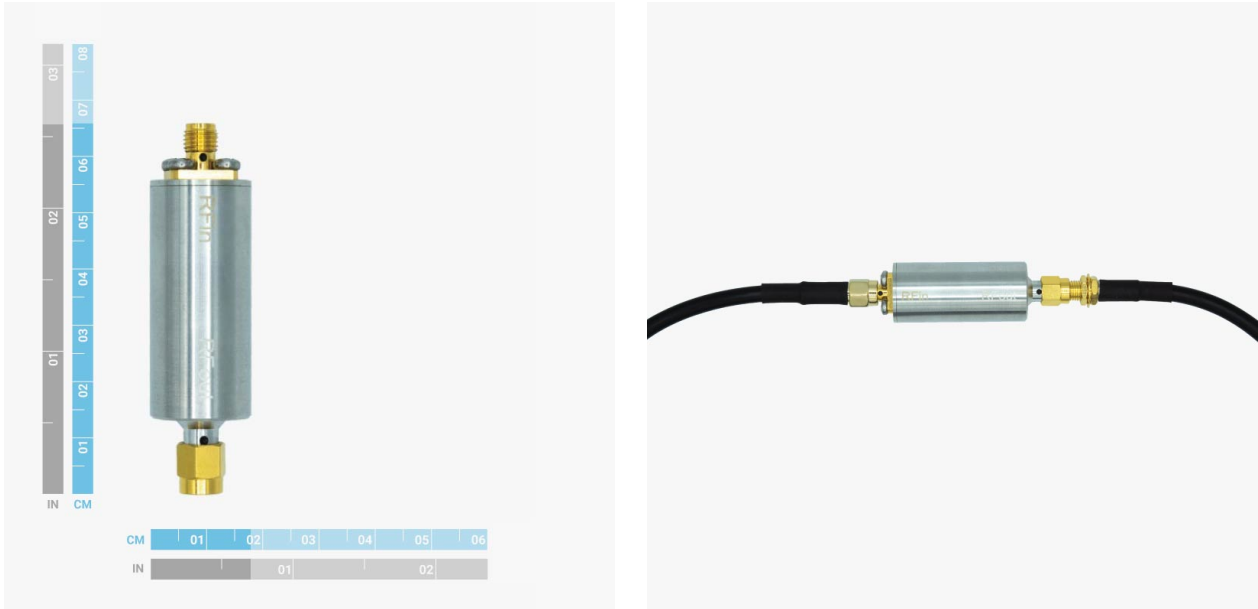
Antenna > 20m cable > Inline GPS/GNSS Antenna Amplifier > 20m cable > Receiver

This product is specially useful for rooftop antenna installations.

Good to know:

- The product comes with SMA female on the antenna side, and SMA male on the receiver side.
- This product is a cheaper alternative to Furuno BA-2670B.

Image Gallery



Inline GPS/GNSS Antenna Amplifier (L1/L2/L5/L6) includes free basic technical support. Contact info@ardusimple.com for more information. Data and descriptions in this document are subject to change without notice. Product photos and pictures are for illustration purposes only and may differ from the real product appearance.