

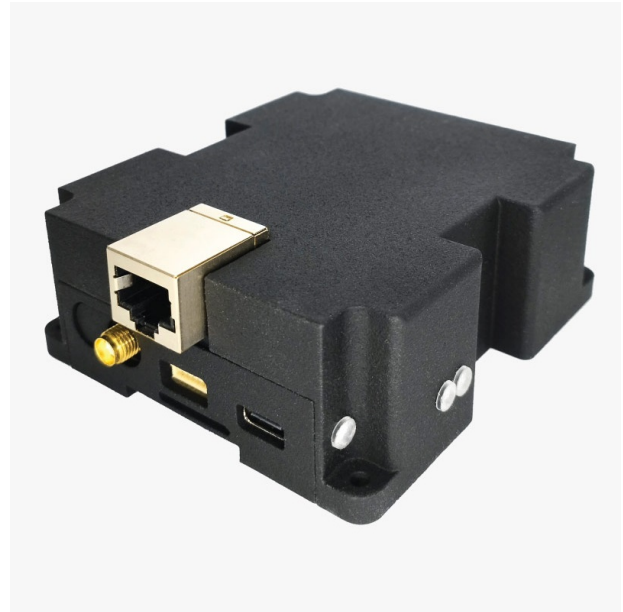
RTK Base Station

Includes:

- 1 RTK Base Station (Mosaic-X5)



More info about the product!



RTK Base Station SKU is: AS-PRO-CORS-L125ETH-00

Get a discounted bulk price on this product for orders of 50 units or more. Contact us at info@ardusimple.com to get a quote.

Description

The ArduSimple RTK Base Station is a housed and ready to use full band full constellation GNSS receiver for 24/7 use. It's based on **Septentrio mosaic-X5** module and is designed to operate as a reference station for local RTK or CORS network densification.

Top performance in all environments thanks to Septentrio patented technologies:

- AIM+ anti-jamming and anti-spoofing
- IONO+ protection against ionospheric disturbances and scintillations
- APME+ multipath mitigation

No subscription required, thanks to its integrated NTRIP:

- Up to 4 simultaneous outgoing NTRIP server connections.
- Embedded NTRIP caster for up to 10 NTRIP clients with individual username/password control.
- Up to 5 simultaneous TCP outputs
- Onboard RINEX and GNSS datalogging, with optional and schedulable push to FTP feature

Compatible with basically any receiver:

- NMEA 0183, v2.3, v3.03, V4.0
- RINEX v2.x, v3.x
- RTCM v2.x, v3.x (MSM included)
- CMR v2.0
- Septentrio Binary Format (SBF)

Easy to configure and monitor thanks to its intuitive web app:

- Available both via USB and Ethernet, it allows you to monitor GNSS indicators and configure your base station and users

The screenshot shows a web browser window with the URL 192.168.3.1. The page displays the Septentrio logo and a status dashboard with the following data:

Receiver	Position	Status
mosaic-X5 S/N 3666952	Lat: N42°30'30.1325" 1.845m	Tracked Sats: 15
IP Address:	Lon: E1°31'49.3294" 0.629m	Time: 2023-10-12 08:25:51
Uptime: 0d 00:57:54	Hgt: 1079.008m 1.793m	Temp: 49.00 °C

Navigation tabs at the bottom include: Overview, GNSS, Communication, Corrections, NMEA/SBF Out, Logging, Admin.

Good to know:

- This product is compatible but doesn't include [multiband GNSS antenna](#), which is necessary to use the product.
- Compatible with existing CORS networks (Continuously Operating Reference Station)
- 868/916MHz radio module can be added as an option, contact us for custom radio integrations
- You will need a Windows PC for the initial configuration. After that the device is reachable via Ethernet from any PC.

AS-PRO-CORS-L125ETH-00 ASB-PRO-CORS-L125ETH-00

RTK Base Station includes free basic technical support. Contact info@ardusimple.com for more information.

Data and descriptions in this document are subject to change without notice. Product photos and pictures are for illustration purposes only and may differ from the real product appearance.